

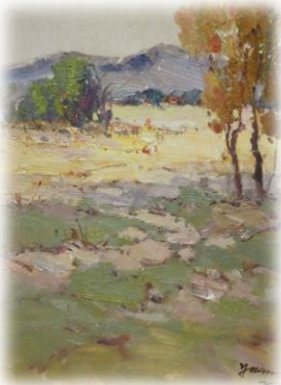


Yuan

This emerging artist brings a fresh application of spontaneity to each landscape. Wei Yi Yuan was born in Guangdong province. He began his art studies as a sculptor learning from the great Chinese Maestro at the Guangzhou Art University. His artist career began with achievements at age 18 for his contemporary efforts 'Non-polar Soul Series One' and 'Non-polar Soul series two": A series of yin and yang (the ever-changing) sentiment expressed in movement, bold colors and mild lines. This concept is derived from Yuan's research and understanding of Taoism, the ancient Chinese original yin and Yang. Taoist realizes the philosophy of 'water' as mood. Charity, home, heart, spirit represent the ancient philosophy that is examined in the "Non-polar series".



Wei Yi Yuan has taken the movement of Yin and Yang to the ever-changing landscape such as mountains, moving rivers and the growing movement of foliage as nature's conception of Tai Ji. Tai Ji is from the understanding and insight of the ancestor, the mother of Yin and Yang. The Yang phase is the contrary that transfers into the Yin, the combination of heaven and earth.



With this new painting consciousness in traditional painting, Yuan uses his paintings skills to handle light and color to show nature's charm in our modern life that can communicate with the audience.



Work from Wei Yi Yuan was introduced to America in February of 2013. He is currently a teacher of Taoism and Art in Guangzhou. He has shown continuously at the Shanghai Art Exposition from 1990-2012. His work is represented in Taiwan's 'Ming Dian Gallery, and Hong Kong's 'Ming Li Yang Hang Gallery', the academicians of Chinese Artist Association in Hong Kong and the Amoy Artist association